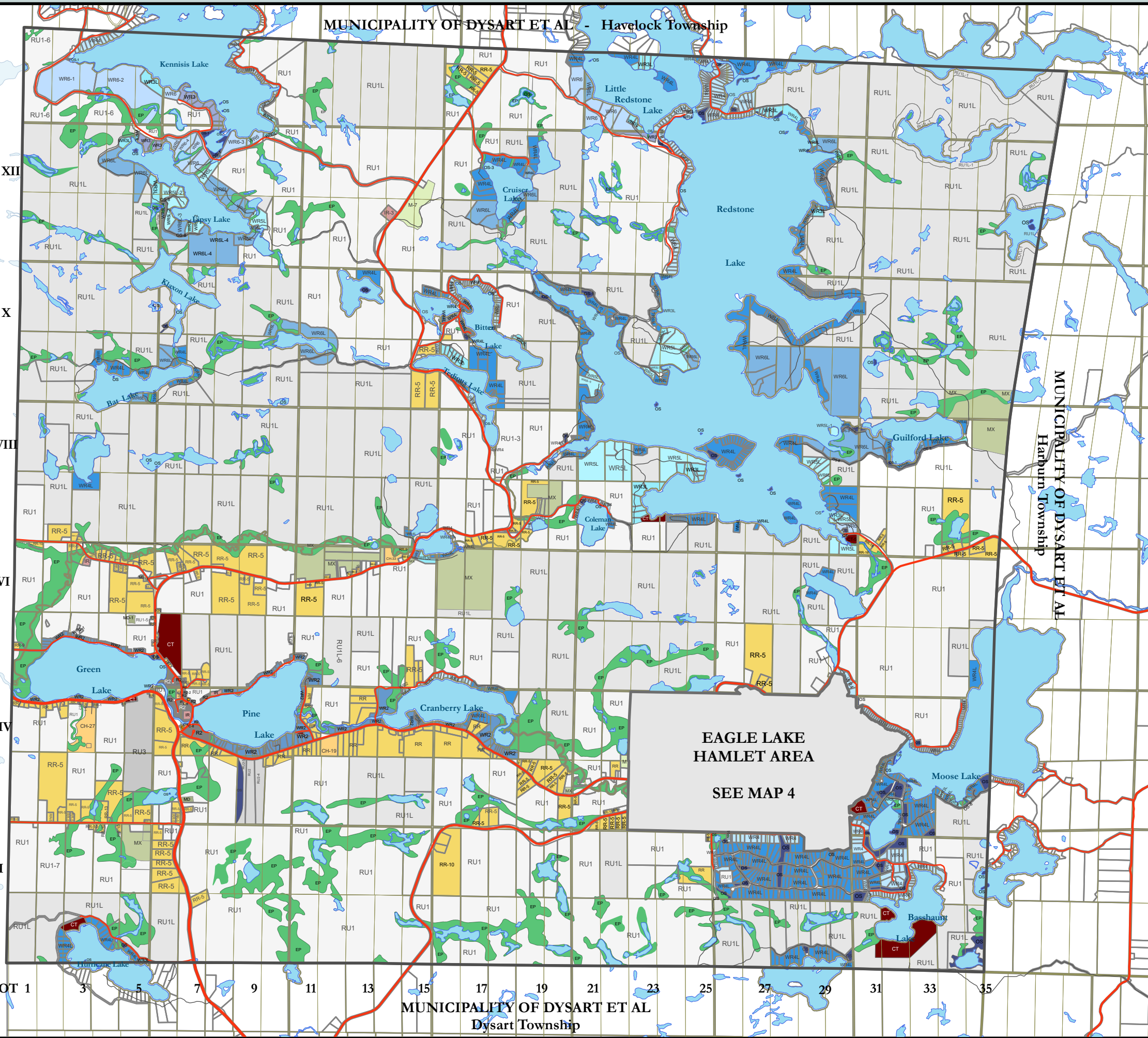


Municipality of Dysart et al GUILFORD TOWNSHIP SCHEDULE "A" MAP 3



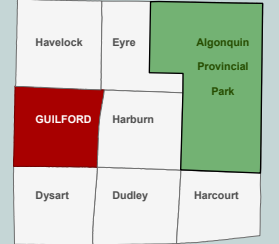
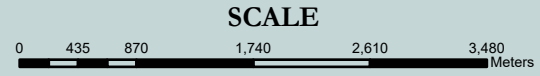
LEGEND

Road Jurisdiction

- Provincial
- County
- Township
- Private

ZONES

- EP - Environmental Protection
- LR - Lake or River
- OS - Open Space
- RU1 - Rural Type 1
- RU1L - Rural Type 1L
- RU3 - Rural Type 3
- RR - Rural Residential
- R2 - Urban Residential Type 2
- WR2 - Waterfront Residential Type 2
- WR3 - Waterfront Residential Type 3
- WR3L - Waterfront Residential Type 3L
- WR4 - Waterfront Residential Type 4
- WR4L - Waterfront Residential Type 4L
- WR5L - Waterfront Residential Type 5L
- WR6 - Waterfront Residential Type 6
- WR6L - Waterfront Residential Type 6L
- IR - Rural Institutional
- MX - Extractive Industrial
- MD - Disposal Industrial
- M - General Industrial
- C - Commercial
- CT - Tourist Commercial
- CH - Highway Commercial



**EAGLE LAKE
HAMLET AREA
SEE MAP 4**

CON XII
CON X
CON VIII
CON VI
CON IV
CON II

LOT 1 3 5 7 9 11 13 15 17 19 21 23 25 27 29 31 33 35

MUNICIPALITY OF DYSART ET AL
Dysart Township

REVISED: March 2026
Designed and produced by the Corporation of the United Townships of Dysart et al.
Copyright by the Corporation of the United Townships of Dysart et al, Haliburton, Ontario, 2020.

DISCLAIMER:
This map is for planning reference purposes only and is not a survey of properties. No representation is made or warranty given as to its content. User assumes all risk of use. The Municipality of Dysart et al assumes no responsibility for any loss resulting from such use. This publication may not be reproduced in any form, in part or in whole, without written permission.

BASE DATA SOURCE:
QUEEN'S PRINTER OF ONTARIO, Ministry of Natural Resources and Forestry (MNRF), the County of Haliburton, the Municipal Property Assessment Corporation (MPAC). Use of this data does not constitute an endorsement by the MNRF, Ontario Government, County of Haliburton or MPAC.