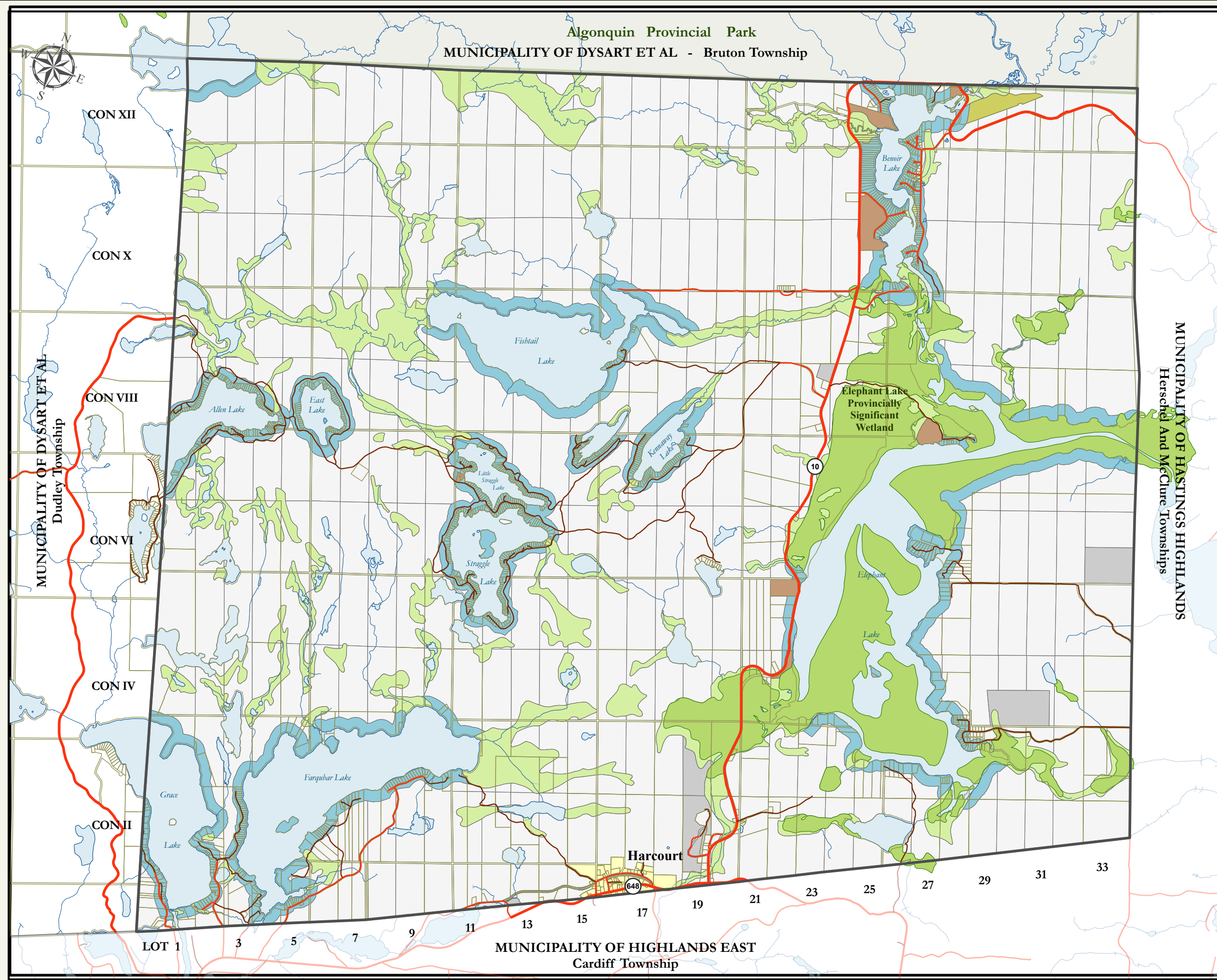


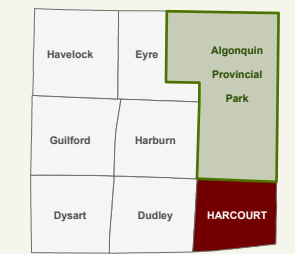
# Municipality of Dysart et al

## HARCOURT TOWNSHIP

### SCHEDULE "A" MAP 7



	Municipal Boundary
	Property Parcel
	Lot/Concession
	Lake
	River
<b>Road Jurisdiction</b>	
	Highway
	County
	Township
	Private
<b>Official Plan Designation</b>	
	Waterfront Residential Area
	Rural Areas
	Resort Commercial Areas
	Employment Areas Overlay
	Public Recreation Areas
	Environmental Protection Areas
	Provincially Significant Wetland Overlay
	Mineral Aggregate Resources Overlay
	Hamlet Areas
	Special Policy Areas SSP-2 - Section 15.1.2



SCALE: 1 : 52,000



REVISED: January, 2026  
 Designed and produced by the Corporation of the United Townships of Dysart et al.  
 Copyright by the Corporation of the United Townships of Dysart et al, Haliburton, Ontario, 2017.  
**DISCLAIMER:**  
 This map is for planning reference purposes only and is not a survey of properties. No representation is made or warranty given as to its content. User assumes all risk of use. The Municipality of Dysart et al assumes no responsibility for any loss resulting from such use. This publication may not be reproduced in any form, in part or in whole, without written permission.  
**BASE DATA SOURCE:**  
 QUEEN'S PRINTER OF ONTARIO, Ministry of Natural Resources and Forestry (MNR), the County of Haliburton, the Municipal Property Assessment Corporation (MPAC). Use of this data does not constitute an endorsement by the MNR, Ontario Government, County of Haliburton or MPAC.