

TOWNSHIP OF ALGONQUIN HIGHLANDS - Livingstone Township



CON XIV

CON XII

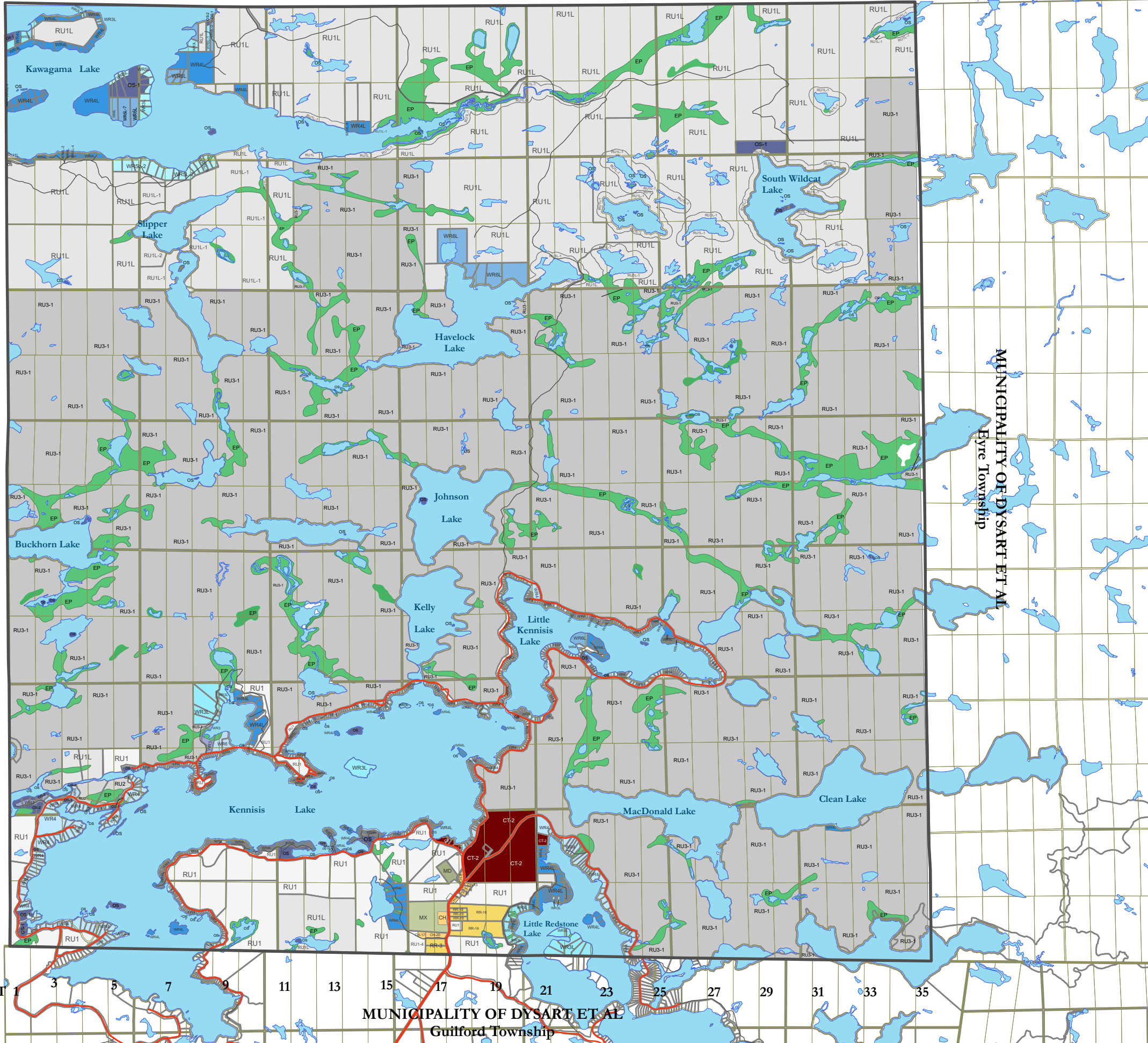
CON X

CON VIII

CON VI

CON IV

CON II



LOT 1 3 5 7 9 11 13 15 17 19 21 23 25 27 29 31 33 35

MUNICIPALITY OF DYSART ET AL
Guilford Township

Municipality of Dysart et al

HAVELOCK TOWNSHIP

SCHEDULE "A" MAP 5

LEGEND

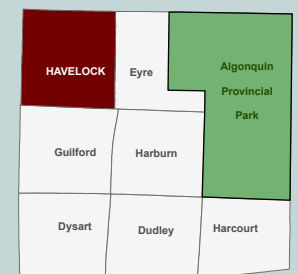
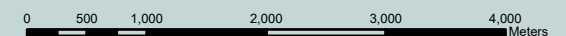
ROAD JURISDICTION

- Provincial
- County
- Township
- Private

Zones

- EP - Environmental Protection
- LR - Lake or River
- OS - Open Space
- RU1 - Rural Type 1
- RU1L - Rural Type 1L
- RU2 - Rural Type 2
- RU3 - Rural Type 3
- RR - Rural Residential
- WR3 - Waterfront Residential Type 3
- WR3L - Waterfront Residential Type 3L
- WR4 - Waterfront Residential Type 4
- WR5L - Waterfront Residential Type 5L
- WR6 - Waterfront Residential Type 6
- WR6L - Waterfront Residential Type 6L
- MX - Extractive Industrial
- MD - Disposal Industrial
- C - Commercial
- CT - Tourist Commercial
- CH - Highway Commercial

SCALE



REVISED: April 2026

Designed and produced by the Corporation of the United Townships of Dysart et al. Copyright by the Corporation of the United Townships of Dysart et al, Haliburton, Ontario, 2020.

DISCLAIMER:

This map is for planning reference purposes only and is not a survey of properties. No representation is made or warranty given as to its content. User assumes all risk of use. The Municipality of Dysart et al assumes no responsibility for any loss resulting from such use. This publication may not be reproduced in any form, in part or in whole, without written permission.

BASE DATA SOURCE:

QUEEN'S PRINTER OF ONTARIO, Ministry of Natural Resources and Forestry (MNRF), the County of Haliburton, the Municipal Property Assessment Corporation (MPAC). Use of this data does not constitute an endorsement by the MNRF, Ontario Government, County of Haliburton or MPAC.