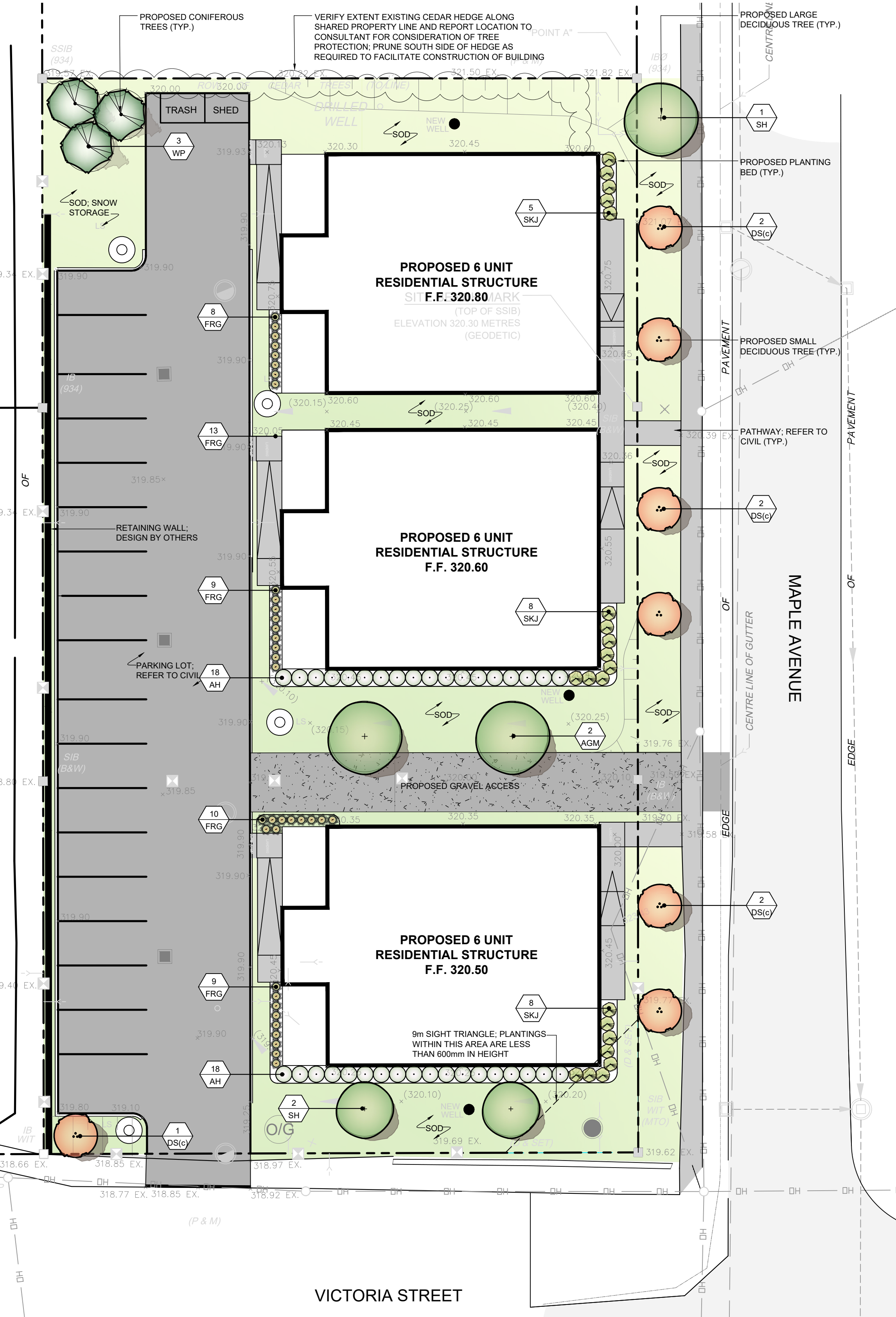


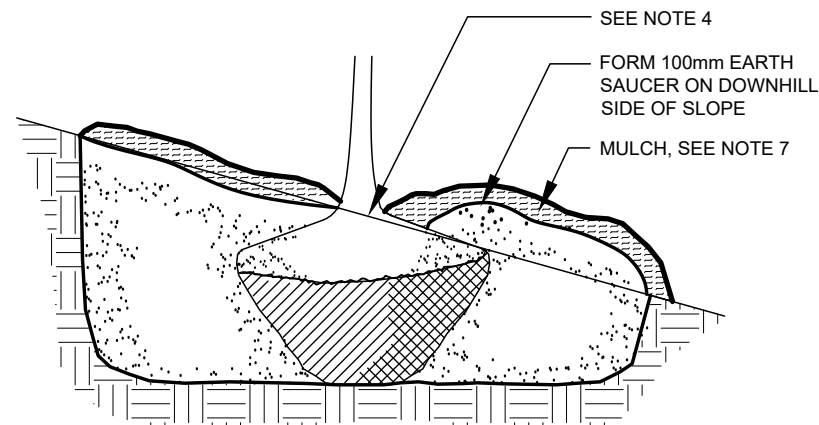
PLANT LIST

Sym	Qty	Botanical Name	Common Name	Size	Condition	Spacing	Comments
<b>Deciduous Trees</b>							
AGM	2	Acer rubrum 'Armstrong Gold'	Armstrong Gold Maple	50 mm	WB		Specimen
DS(c)	7	Amelanchier canadensis (Clump)	Downy Serviceberry	250cm height	WB		Well formed trunk grouping, canopy 5' above grade
SH	3	Gleditsia triacanthos var. 'Inermis' 'Draves'	Street Keeper Honey Locust	50 mm	WB		Specimen
<b>Coniferous Trees</b>							
WP	3	Pinus strobus	White Pine	200 cm	WB		Single leader, specimen, spring planting only
<b>Deciduous Shrubs</b>							
AH	36	Hydrangea arborescens 'Annabelle'	Annabelle Hydrangea	3 gal.	container		
<b>Coniferous Shrubs</b>							
SK	21	Juniperus sabina 'Slandia'	Slandia Juniper	3 gal.	container		
<b>Grasses / Sedges</b>							
FRG	49	Calamagrostis acutiflora 'Karl Foerster'	Karl Foerster Feather Reed Grass	1 gal.	container	750mm o.c.	
* NOTE: NO SUBSTITUTIONS UNLESS APPROVED BY LANDSCAPE ARCHITECT PRIOR TO DELIVERY TO THE SITE							



NOTES:

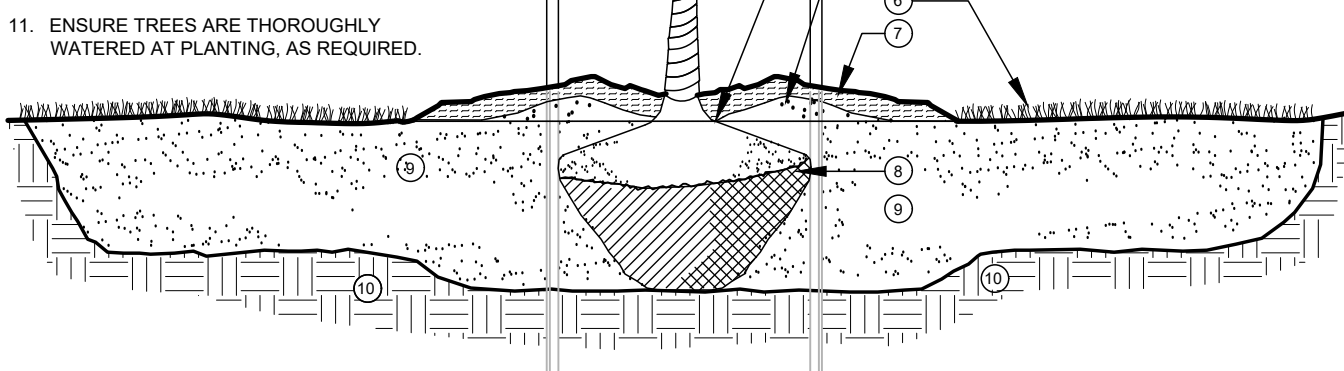
- PRUNE BRANCHES TO CAREFULLY REMOVE DEAD, BROKEN, DAMAGED AND INTERFERING BRANCHES. DOUBLE LEADERS AND NARROW ANGLE BRANCH UNIONS WHILE RETAINING NATURAL FORM OF TREE. THIN HEAD WHEN AND WHERE APPLICABLE. DO NOT CUT LEADER BRANCHES.
- ALL STAKES ARE TO BE WOODEN STAKES AND TIES ARE TO BE COMPOSED OF NON-FUNCTIONING TREATED BINDER TWINE OR SINGLE LAYER NON-TREATED BURLAP OR FABRIC. STAKING TO BE REMOVED ONE YEAR AFTER INSTALLATION.
- REMOVE ALL TREE TRUNK WRAP FOLLOWING PLANTING.
- ROOT COLLAR TO BE PLACED AT SAME LEVEL AS SURROUNDING GRADE. IN HEAVY CLAY ALL WOODY PLANTS TO BE PLACED SO THAT THE TOP OF THE ROOT COLLAR IS POSITIONED 75-100 mm ABOVE FINISHED GROUND ELEVATION.
- 75mm RAISED WATERING SAUCER AROUND TREE.
- ADJACENT SOD OR SEED.
- 75mm THICK LAYER OF NATURAL SHREDDED PINE BARK MULD (NO DYES). KEEP MULCH 150 mm FROM TRUNK.
- CUT AND REMOVE TOP THIRD OF ALL WIRE, ROPE, BURLAP AND TWINE FROM ROOTBALL AND FROM AROUND TRUNK.
- EXCAVATED AREA: TRIPLE MIX FROM AN APPROVED SOURCE TO BE BACKFILLED AND CONCURRENTLY TAMPED AND WATERED TO ELIMINATE AIR POCKETS.
- SOIL PREPARATION AREA TO BE 5x ROOTBALL DIAMETER. SCARIFY SOIL PREPARATION AREA TO A MINIMUM DEPTH OF 300 mm BEFORE PLANTING. INSTALL FILTER CLOTH BELOW PLANTING SOIL MIX IF PLANTING ON ENGINEERED OR GRANULAR FILL.
- ENSURE TREES ARE THOROUGHLY WATERED AT PLANTING, AS REQUIRED.



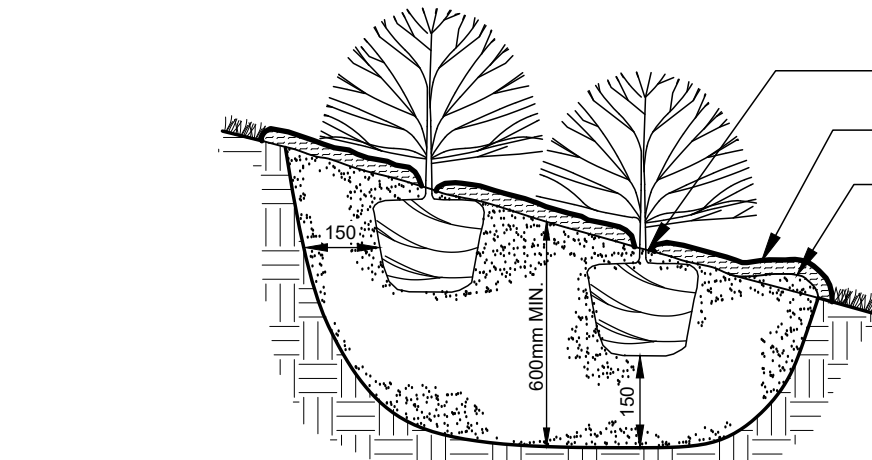
FOR PLANTING ON SLOPE

GENERAL NOTES:

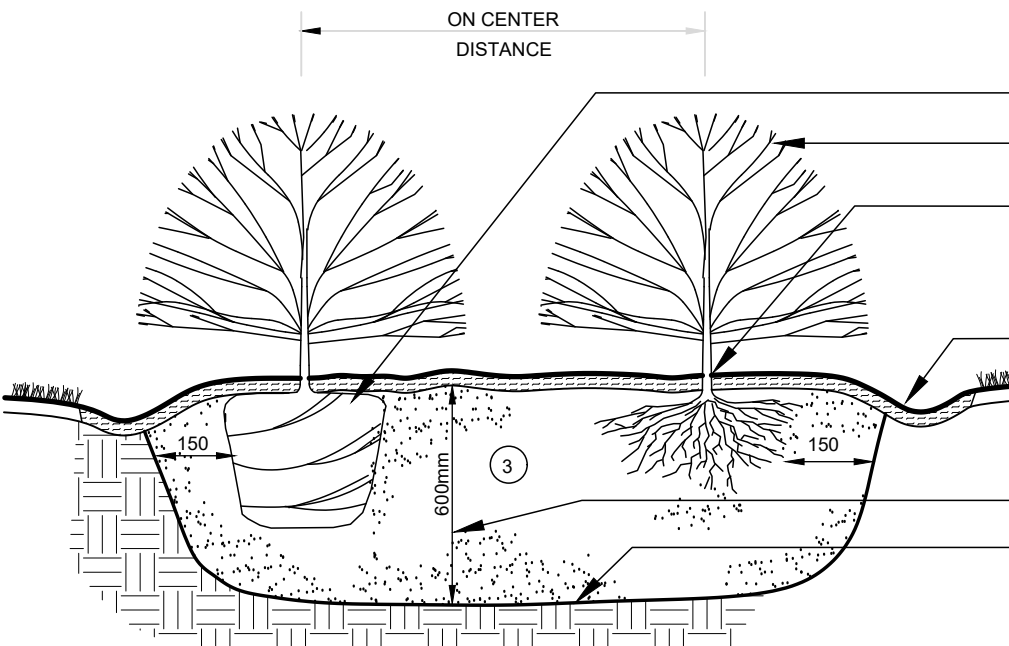
- SELECT TREES THAT ARE FREE OF DISEASES, DAMAGE AND GIRDLED ROOTS. REVIEW NURSERY STOCK PRIOR TO DELIVERY. MINIMUM CALIPER SIZE TO BE 50mm.
- PLANTING TO BE IN ACCORDANCE WITH CANADIAN NURSERY AND LANDSCAPE ASSOCIATION CANADIAN STANDARDS FOR NURSERY STOCK, THE LANDSCAPE ASSOCIATION OF ONTARIO HORTICULTURAL TRADES ASSOCIATION LANDSCAPE GUIDELINES AND STANDARDS, AND THE INTERNATIONAL SOCIETY OF ARBORICULTURE FOR TREES AND SHRUBS.
- CONTRACTOR IS RESPONSIBLE FOR OBTAINING WRITTEN CONFIRMATION OF UTILITY LOCATES PRIOR TO COMMENCEMENT OF WORK.



1 L1 DECIDUOUS TREE PLANTING DETAIL



FOR PLANTING ON SLOPE



NOTES:

- NEVER CUT EVERGREEN LEADER. REMOVE ANY BROKEN STEMS, BRANCHES OR LARGE LEAVES ON PERENNIALS. RETAIN NATURAL SHAPE.
- CUT AND REMOVE TOP THIRD OF BURLAP FROM ROOT BALL REMOVE POTS.
- EXCAVATE ENTIRE PLANTING BED AS SHOWN ON PLAN. INSTALL TRIPLE-MIX FROM AN APPROVED SOURCE.
- SCARIFY SURFACE OF COMPACTED SUBSOIL BEFORE PLANTING.
- PLANTS SHALL BEAR SAME RELATION TO FINISHED GRADE AS THEY BORE TO PREVIOUS EXISTING GRADE.
- 75 mm THICK LAYER OF NATURAL SHREDDED PINE BARK MULD (NO DYES) TO EXTEND PAST DRIPLINE OF SHRUBS. PROVIDE SAMPLE FOR REVIEW AND APPROVAL. KEEP MULCH OFF OF STEPS.
- SHRUBS PLANTED IN GROUPS SHALL BE SET IN CONTINUOUS PLANTING SOIL BEDS.

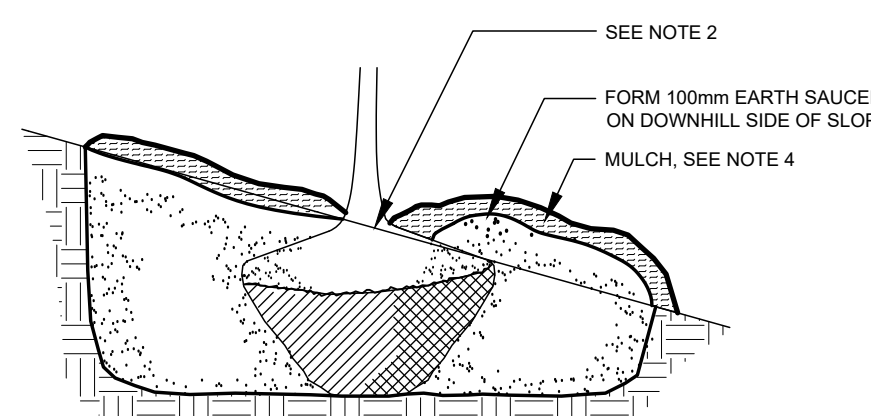
GENERAL NOTES:

- SELECT PLANT MATERIAL THAT IS FREE OF DISEASES, DAMAGE AND GIRDLED ROOTS. REVIEW NURSERY STOCK PRIOR TO DELIVERY.
- PLANTING TO BE IN ACCORDANCE WITH CANADIAN NURSERY AND LANDSCAPE ASSOCIATION CANADIAN STANDARDS FOR NURSERY STOCK, THE LANDSCAPE ASSOCIATION OF ONTARIO HORTICULTURAL TRADES ASSOCIATION LANDSCAPE GUIDELINES AND STANDARDS, AND THE INTERNATIONAL SOCIETY OF ARBORICULTURE FOR TREES AND SHRUBS.
- CONTRACTOR IS RESPONSIBLE FOR OBTAINING WRITTEN CONFIRMATION OF UTILITY LOCATES PRIOR TO COMMENCEMENT OF WORK.

3 L1 SHRUB PLANTING DETAIL

NOTES:

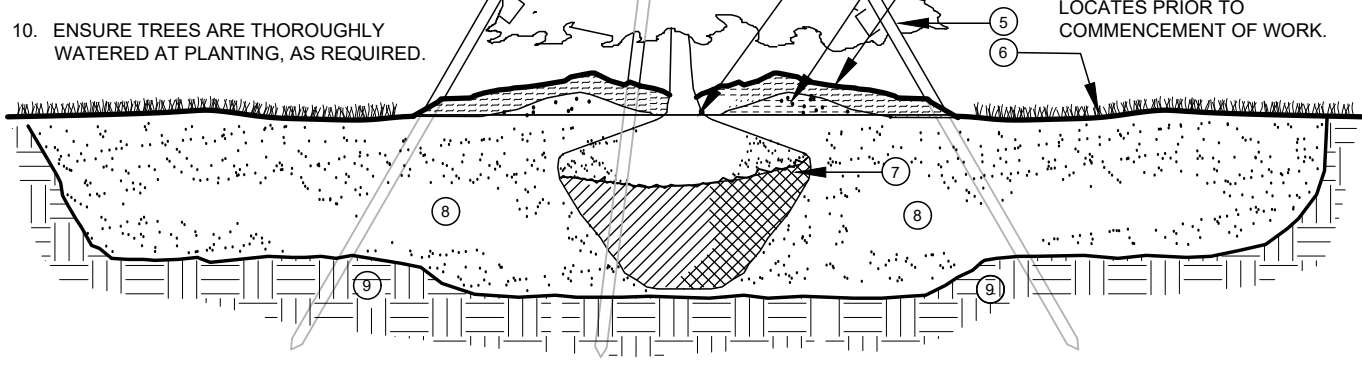
- PRUNE BRANCHES TO CAREFULLY REMOVE DEAD, BROKEN, DAMAGED AND DOUBLE LEADERS. NEVER CUT A SINGLE LEADER. RETAIN NATURAL FORM OF TREE.
- ROOT COLLAR TO BE PLACED AT SAME LEVEL AS SURROUNDING GRADE. IN HEAVY CLAY ALL WOODY PLANTS TO BE PLACED SO THAT THE TOP OF THE ROOT COLLAR IS POSITIONED 75-100 mm ABOVE FINISHED GROUND ELEVATION.
- 75mm RAISED WATERING SAUCER AROUND TREE.
- 75mm THICK LAYER OF NATURAL SHREDDED PINE BARK MULD (NO DYES). KEEP MULCH 150mm FROM TRUNK.
- STAKE IMMEDIATELY. USE 3 WOOD STAKES FOR TREES UP TO 2 m HEIGHT. STAKES TO BE DRIVEN 300 mm INTO UNDISTURBED SUBSOIL, AT AN ANGLE NO LESS THAN 45° AND NO MORE THAN 60°. SPACED IN THIRDS OF A CIRCLE. USE BIODEGRADABLE MATERIAL, SUCH AS FOLDED BURLAP STAPLED TO STAKE WITH FENCE STAPLES OR ROOFING NAILS. TO TIE THE TREE TO THE STAKES, BURLAP TO TIE ALL STAKES AND TREE TRUNK IN A CONTINUOUS LOOPING. AVOID CONTACT OF STAKES WITH TREE TRUNK. STAKING TO BE REMOVED ONE YEAR AFTER INSTALLATION.
- ADJACENT SOD OR SEED.
- CUT AND REMOVE TOP THIRD OF ALL WIRE, ROPE, BURLAP AND TWINE FROM ROOTBALL AND FROM AROUND TRUNK.
- EXCAVATED AREA: TRIPLE MIX FROM AN APPROVED SOURCE TO BE BACKFILLED AND CONCURRENTLY TAMPED AND WATERED TO ELIMINATE AIR POCKETS.
- SOIL PREPARATION AREA TO BE 5x ROOTBALL DIAMETER. SCARIFY SOIL PREPARATION AREA TO A DEPTH OF 300 mm BEFORE PLANTING. INSTALL FILTER CLOTH BELOW PLANTING SOIL MIX IF PLANTING ON ENGINEERED OR GRANULAR FILL.
- ENSURE TREES ARE THOROUGHLY WATERED AT PLANTING, AS REQUIRED.



FOR PLANTING ON SLOPE

GENERAL NOTES:

- SELECT TREES THAT ARE FREE OF DISEASES, DAMAGE AND GIRDLED ROOTS. REVIEW NURSERY STOCK PRIOR TO DELIVERY.
- PLANTING TO BE IN ACCORDANCE WITH CANADIAN NURSERY AND LANDSCAPE ASSOCIATION CANADIAN STANDARDS FOR NURSERY STOCK, THE LANDSCAPE ASSOCIATION OF ONTARIO HORTICULTURAL TRADES ASSOCIATION LANDSCAPE GUIDELINES AND STANDARDS, AND THE INTERNATIONAL SOCIETY OF ARBORICULTURE FOR TREES AND SHRUBS.
- CONTRACTOR IS RESPONSIBLE FOR OBTAINING WRITTEN CONFIRMATION OF UTILITY LOCATES PRIOR TO COMMENCEMENT OF WORK.



2 L1 CONIFEROUS TREE PLANTING DETAIL

GENERAL NOTES:

- CONTRACTOR SHALL VERIFY ALL DIMENSIONS AND SITE CONDITIONS BEFORE PROCEEDING WITH THE WORK, AND REPORT ANY DISCREPANCIES TO THE LANDSCAPE ARCHITECT BEFORE PROCEEDING. NO ALLOWANCE SHALL BE MADE ON BEHALF OF THE CONTRACTOR FOR FAILURE TO DO SO.
- CONTRACTOR SHALL BE RESPONSIBLE FOR VERIFYING AND STAKING OUT THE LOCATION OF ALL EXISTING UTILITIES AND SERVICES. CONTRACTOR SHALL GIVE UTILITIES ADVANCE NOTICE PRIOR TO DIGGING.
- LANDSCAPE ARCHITECT IS NOT RESPONSIBLE FOR ACCURACY OF SURVEY OR ENGINEERING DRAWINGS. REFER TO APPROPRIATE DRAWINGS BEFORE PROCEEDING WITH THE WORK.
- CONTRACTOR SHALL ESTABLISH ALL PROPERTY BOUNDARIES AND CORNER STAKES, AND SHALL BE RESPONSIBLE FOR ALL COSTS OF RE-ESTABLISHING THEM SHOULD THEY BE DISTURBED.
- CONTRACTOR SHALL NOTIFY LANDSCAPE ARCHITECT MINIMUM 48 HOURS PRIOR TO COMMENCEMENT OF WORK TO COORDINATE INSPECTION SCHEDULES.
- CONTRACTOR TO CONFIRM PHYSICAL LAYOUT OF ALL LANDSCAPE AND PLANTINGS WITH LANDSCAPE ARCHITECT BEFORE PROCEEDING.
- CONSTRUCTION MUST CONFORM TO ALL APPLICABLE CODES AND REGULATIONS OF ALL AUTHORITIES HAVING JURISDICTION.
- REFUELING, LUBRICATION AND/OR MAINTENANCE OF CONSTRUCTION VEHICLES IS NOT PERMITTED ON SITE UNLESS APPROVED BY THE OWNER IN WRITING.
- CONTRACTOR SHALL BE RESPONSIBLE FOR ANY DAMAGE TO EXISTING STREETS, SIDEWALKS, STRUCTURES, AND MATURE TREES TO REMAIN DURING CONSTRUCTION OF THIS PROJECT AND SHALL REPAIR SUCH DAMAGE AND CLEAN UP CONSTRUCTION DEBRIS TO THE SATISFACTION OF THE OWNER AND THE MUNICIPALITY AT NO ADDITIONAL COST.
- THE CONTRACTOR, UPON ACCEPTANCE OF THE CONTRACT, ASSUMES COMPLETE RESPONSIBILITY AND LIABILITY FOR THE JOB SITE DURING THE COURSE OF CONSTRUCTION, AND WILL ENSURE PUBLIC SAFETY AND CLEANLINESS OF MUNICIPAL ROADS NEAR THE SITE.
- ALL DRAWINGS, SPECIFICATIONS AND RELATED DOCUMENTS ARE THE COPYRIGHT OF THE LANDSCAPE ARCHITECT AND MUST BE RETURNED UPON REQUEST. REPRODUCTION OF DRAWINGS, SPECIFICATIONS AND RELATED DOCUMENTS IN WHOLE OR IN PART IS FORBIDDEN WITHOUT THE LANDSCAPE ARCHITECT'S PERMISSION. DRAWINGS ARE NOT TO BE SCALED.

APPLICATION OF TOPSOIL:

- EXISTING TOPSOIL IS TO BE STOCKPILED IN LOCATION APPROVED BY OWNER AND USED AS APPROPRIATE FOR PROPOSED WORK. SCREEN ROCKS AND DEBRIS PRIOR TO USE. IMPORT TOPSOIL AS REQUIRED.
- CONTRACTOR IS TO PROVIDE NUTRIENT ANALYSIS AND GRAIN SIZE ANALYSIS FOR ALL NEW OR EXISTING TOPSOIL TO BE USED ON SITE AND TO OBTAIN APPROVAL OF LANDSCAPE ARCHITECT PRIOR TO APPLICATION.
- SCARIFY EXISTING SUBGRADE AND APPLY A MINIMUM OF 300mm (12") OF TOPSOIL OVER DISTURBED AREA.
- REMOVE DEBRIS, ROOTS, BRANCHES, STONES IN EXCESS OF 50mm (2") DIA. AND OTHER DELETERIOUS MATERIALS.
- SPREAD TOPSOIL IN UNIFORM AREA, EACH LAYER NOT EXCEEDING 150mm (6").
- ALL DISTURBED LAWN AREAS ARE TO BE SEEDED OR SODDED.

SODDING:

- OBTAIN APPROVAL OF FINISHED GRADE PRIOR TO INSTALLATION OF SOD.
- SUPPLY AND PLACE SCREENED TOPSOIL OVER SUBGRADE WHICH HAS BEEN SCARIFIED TO 150mm DEPTH AND COMPACTED TO 95% P.C. PRIOR TO PLACEMENT OF TOPSOIL.
- SUPPLY AND PLACE NUMBER ONE TURFGRASS NURSERY SOD, SOD THAT HAS BEEN ESPECIALLY SOWN AND CULTIVATED IN NURSERY FIELDS AS TURFGRASS CROP.
- FINE GRADE TOPSOIL SURFACE FREE OF HUMPS AND HOLLOWES TO SMOOTH, EVEN GRADE, TO TOLERANCE OF +/- 15mm FOR TURFGRASS NURSERY SOD.
- PLANTS TO DRAIN POSITIVELY AWAY FROM BUILDING.
- LAY SOD WITHIN 24 HOURS OF BEING LIFTED IF AIR TEMPERATURE EXCEEDS 20 DEGREES CELSIUS.
- LAY SOD PERPENDICULAR IN ROWS, JOINTS STAGGERED. BUTT SECTIONS CLOSELY WITHOUT OVERLAPPING OR LEAVING GAPS BETWEEN SECTIONS. CUT OUT IRREGULAR, DISCOLOURED OR THIN SECTIONS WITH SHARP IMPLEMENTS.
- LAY SOD PERPENDICULAR TO DIRECTION OF SLOPE.

SEEDING:

- SEED UNDEVELOPED PHASES AS PER PHASING PLAN (BY OTHERS) WITH "ENVIROGREEN 2000" BY DLF PICKSEED, (705) 8878-9240. info@pickseed.com, LINDSAY, ONTARIO. SUPPLY AND INSTALLATION INSTRUCTIONS AS PER MANUFACTURER'S RECOMMENDED RATE.
- CONTAINS: 30% CREEPING RED FESCUE, 25% PERENNIAL RYEGRASS, 25% INTERMEDIATE RYEGRASS, 10% KENTUCKY BLUEGRASS, 10% CHEWINGS FESCUE.

- APPLY SEED BETWEEN AUGUST 15 AND OCTOBER 15, OR WITHIN THE FIRST 3 WEEKS OF MAY, WEATHER PERMITTING. REFER TO MANUFACTURER'S SPECIFICATIONS FOR APPLICATION.
- WATER SEEDED AREAS AS REQUIRED TO ENSURE GERMINATION AND CONTINUOUS GROWTH AND UNTIL FINAL ACCEPTANCE.
- AREAS WILL BE ACCEPTED PROVIDED THAT SEEDED AREAS ARE UNIFORMLY ESTABLISHED AND FREE OF RUTTED, ERODED, BARE, OR DEAD SPOTS.

PLANTING

REFER TO PLANTING DETAILS FOR INSTALLATION NOTES.

- DO NOT SUBSTITUTE PLANT MATERIAL IN SPECIES, VARIETY OR SIZE WITHOUT APPROVAL FROM LANDSCAPE ARCHITECT.
- IN THE EVENT OF A DISCREPANCY BETWEEN PLANT LIST AND PLAN, QUANTITIES SHOWN ON PLAN SHALL TAKE PRECEDENCE OVER THE PLANT LIST.
- PLANTS SHOWN ON THE PLAN BUT NOT INCLUDED ON THE LIST ARE THE CONTRACTOR'S RESPONSIBILITY TO SUPPLY AND INSTALL, REGARDLESS OF THE PLANT LIST. PLEASE REPORT ANY DISCREPANCIES BETWEEN THE PLAN AND THE LIST IMMEDIATELY TO THE LANDSCAPE ARCHITECT.
- SPACING TO BE AS SHOWN ON PLAN OR EQUALLY SPACED IN AREA SHOWN ON PLAN.
- PROVIDE ALL PLANT MATERIAL IN ACCORDANCE WITH SPECIFICATIONS ESTABLISHED BY THE CANADIAN NURSERY TRADE ASSOCIATION WITH REGARDS TO QUALITY AND GRADING AND SIZED AS PER PLANT LIST.
- PLANTS ARE TO BE NO. 1 NURSERY GROWN UNDER PROPER CULTURAL PRACTICES, IN PARTICULAR WITH RESPECT TO AMPLE SPACING, PEST AND DISEASE CONTROL, AND BRANCH AND ROOT PRUNING. TREES SHALL HAVE STURDY, STRAIGHT TRUNKS, WELL BRANCHED AND BALANCED WITH A STRONG CENTRAL LEADER.
- WATER TEST EXCAVATED TREE PITS FOR WATER POROSITY PRIOR TO PLANTING AND REPORT TO LANDSCAPE ARCHITECT.
- STRICTLY ADHERE TO PLANTING DETAILS TO ENSURE ADEQUATE PLANTING SOIL MIX AROUND PLANT MATERIAL.

- IN ALL PLANTING OPERATIONS, BACK FILL WITH SOIL MIXTURE IN 6" LAYERS AND FIRMLY TAMP EACH LAYER TO ENSURE PLANT RETAINS ITS ORIENTATION. ENSURE NO AIR POCKETS REMAIN AROUND ROOTS. WATER THOROUGHLY.
- PLANTS TO BE ORIENTATED TO PRESENT THE BEST FACE TOWARDS PRIORITY VIEWING AREAS.
- PLANT ALL SHRUBS IN CONTINUOUS PLANTING BEDS, WHERE APPROPRIATE.
- EXCEPT FOR PLANTS IN PLANTING BEDS, CONSTRUCT AN EARTH SAUCER AROUND THE ROOTS.
- MULCH AS SHOWN IN DETAILS, AND PRUNE VEGETATION AS REQUIRED TO COMPENSATE FOR ROOT LOSS.

PLANTING WARRANTY

- CONTRACTOR WARRANTS THAT ALL PLANT MATERIAL, AS ITEMIZED ON THE PLANT LIST, REMAINS FREE OF DEFECTS FOR A PERIOD OF 2 YEARS FROM THE TIME OF SUBSTANTIAL COMPLETION.
- THE MAINTENANCE OF PLANT MATERIAL DURING THE WARRANTY PERIOD SHALL BE THE RESPONSIBILITY OF THE CONTRACTOR. MAINTENANCE SHALL INCLUDE ALL MEASURES NECESSARY TO ESTABLISH AND MAINTAIN ALL PLANTS IN A VIGOROUS AND HEALTHY GROWING CONDITION, THAT INCLUDES, BUT IS NOT LIMITED TO, WEEDING AND WATERING.
- DURING THE WARRANTY PERIOD, REPLACE ALL MATERIAL THAT IS DEAD OR NOT IN AN ACCEPTABLE GROWING CONDITION. BEDS AND TREE PITS MUST BE FRESHLY CULTIVATED AND FREE OF WEEDS, RUBBISH OR DEBRIS.
- IF PLANT MATERIAL IS NOT IN A VIGOROUS GROWING CONDITION OR CHARACTERISTIC FOR WEAKNESS DURING THE WARRANTY PERIOD, THE OWNER OR CONSULTANT MAY REQUEST AN ADDITIONAL YEAR OF WARRANTY.
- ANY PLANTS REPLACED DURING THE WARRANTY PERIOD SHALL BE COVERED BY THE INITIAL 1 YEAR WARRANTY AND THE EXTENSION, IF NECESSARY APPLICATION OF TOPSOIL.
- EXISTING TOPSOIL IS TO BE STOCKPILED IN LOCATION APPROVED BY OWNER. SCREEN ROCKS AND DEBRIS PRIOR TO USE.
- EXISTING TOPSOIL IS TO BE STOCKPILED AND USED AS APPROPRIATE FOR PROPOSED WORK, IMPORT TOPSOIL AS REQUIRED.
- CONTRACTOR IS TO PROVIDE NUTRIENT ANALYSIS AND GRAIN SIZE ANALYSIS FOR ALL NEW OR EXISTING TOPSOIL TO BE USED ON SITE AND TO OBTAIN APPROVAL OF LANDSCAPE ARCHITECT PRIOR TO APPLICATION.
- SCARIFY EXISTING SUBGRADE AND APPLY A MINIMUM OF 12" OF TOPSOIL OVER DISTURBED AREA.
- REMOVE DEBRIS, ROOTS, BRANCHES, STONES IN EXCESS OF 2" DIA. AND OTHER DELETERIOUS MATERIALS.
- SPREAD TOPSOIL IN UNIFORM AREA, EACH LAYER NOT EXCEEDING 6".
- ALL DISTURBED LAWN AREAS ARE TO BE SODDED.

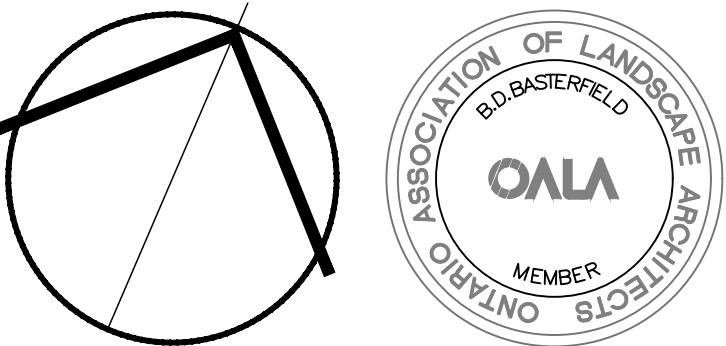
Note:

This drawing is the property of the Landscape Architect and may not be reproduced or used without the expressed consent of the Landscape Architect. The Contractor is responsible for checking and verifying all levels and dimensions and shall report all discrepancies to the Landscape Architect and obtain clarification prior to commencing work.

- Contractor shall verify all dimensions and site conditions before proceeding with the work, and report any discrepancies to the Landscape Architect before proceeding. No allowance shall be made on behalf of the Contractor for failure to do so.
- Contractor shall be responsible for verifying and staking out the location of all existing utilities and services. Contractor shall give utilities advance notice prior to digging.
- Landscaping Architect is not responsible for accuracy of survey or engineering drawings. Refer to appropriate drawings before proceeding with the work.
- Contractor shall establish all property boundaries and corner stakes, and shall be responsible for all costs of re-establishing them should they be disturbed.
- Contractor shall notify Landscape Architect minimum 48 hours prior to commencement of work to coordinate inspection schedules.
- Contractor to confirm physical layout of all landscape and plantings with Landscape Architect before proceeding.
- Construction must conform to all applicable Codes and Regulations of all authorities having jurisdiction.
- Refueling, lubrication and/or maintenance of construction vehicles is not permitted on site unless approved by the Owner in writing.
- Contractor shall be responsible for any damage to existing streets, sidewalks, structures, and mature trees to remain during construction of this project and shall repair such damage and clean up construction debris to the satisfaction of the Owner and the Municipality at no additional cost.
- The Contractor, upon acceptance of the contract, assumes complete responsibility and liability for the job site during the course of construction, and will ensure public safety and cleanliness of municipal roads near the site.
- All drawings, specifications and related documents are the copyright of the Landscape Architect and must be returned upon request. Reproduction of drawings, specifications and related documents in whole or in part is forbidden without the Landscape Architect's permission. Drawings are not to be scaled.

PERCENTAGE OF TOTAL LANDSCAPE AREA COVERAGE WITHIN PROPERTY BOUNDARY: 28%

2.	Issued	7 OCT. 2022
1.	Issued	28 APRIL 2022
No.	Issued / Revision	Date



**Basterfield & Associates**  
LANDSCAPE ARCHITECTS  
416 Chambers St., Peterborough, ON, K9H 3V1  
Tel. 705.745.3623 www.basterfield.ca

Project-Client

MAPLE AVENUE SUITES

HALIBURTON, ONTARIO

LANDSCAPE PLAN

Scale	1:200
Date	FEBRUARY 2022
Drawn By	NYL
Checked	BDB
B&A Project No.	22-05
Drawing No.	L1